

# IRF4 Is a Suppressor of c-Myc Induced B Cell Leukemia

Simanta Pathak<sup>1,9</sup>, Shibin Ma<sup>1,9</sup>, Long Trinh<sup>1</sup>, James Eudy<sup>1</sup>, Kay-Uwe Wagner<sup>2</sup>, Shantaram S. Joshi<sup>1</sup>, Runqing Lu<sup>1\*</sup>

**1** Department of Genetics, Cell Biology and Anatomy, University of Nebraska Medical Center, Omaha, Nebraska, United States of America, **2** Eppley Institute for Research in Cancer and Allied Diseases, University of Nebraska Medical Center, Omaha, Nebraska, United States of America

## Abstract

Interferon regulatory factor 4 (IRF4) is a critical transcriptional regulator in B cell development and function. We have previously shown that IRF4, together with IRF8, orchestrates pre-B cell development by limiting pre-B cell expansion and by promoting pre-B cell differentiation. Here, we report that IRF4 suppresses c-Myc induced leukemia in  $E\mu$ Myc mice. Our results show that c-Myc induced leukemia was greatly accelerated in the IRF4 heterozygous mice (IRF4<sup>+/-</sup>Myc); the average age of mortality in the IRF4<sup>+/-</sup>Myc mice was only 7 to 8 weeks but was 20 weeks in the control mice. Our results show that IRF4<sup>+/-</sup>Myc leukemic cells were derived from large pre-B cells and were hyperproliferative and resistant to apoptosis. Further analysis revealed that the majority of IRF4<sup>+/-</sup>Myc leukemic cells inactivated the wild-type IRF4 allele and contained defects in Arf-p53 tumor suppressor pathway. p27<sup>kip</sup> is part of the molecular circuitry that controls pre-B cell expansion. Our results show that expression of p27<sup>kip</sup> was lost in the IRF4<sup>+/-</sup>Myc leukemic cells and reconstitution of IRF4 expression in those cells induced p27<sup>kip</sup> and inhibited their expansion. Thus, IRF4 functions as a classical tumor suppressor to inhibit c-Myc induced B cell leukemia in  $E\mu$ Myc mice.

**Citation:** Pathak S, Ma S, Trinh L, Eudy J, Wagner K-U, et al. (2011) IRF4 Is a Suppressor of c-Myc Induced B Cell Leukemia. PLoS ONE 6(7): e22628. doi:10.1371/journal.pone.0022628

**Editor:** Christopher Bunce, The University of Birmingham, United Kingdom

**Received:** May 8, 2011; **Accepted:** June 27, 2011; **Published:** July 27, 2011

**Copyright:** © 2011 Pathak et al. This is an open-access article distributed under the terms of the Creative Commons Attribution License, which permits unrestricted use, distribution, and reproduction in any medium, provided the original author and source are credited.

**Funding:** This work was supported by National Institutes of Health grant AI-67891. The funders had no role in study design, data collection and analysis, decision to publish, or preparation of the manuscript.

**Competing Interests:** The authors have declared that no competing interests exist.

\* E-mail: rlu@unmc.edu

**9** These authors contributed equally to this work.

## Introduction

B cell development features a sequential rearrangement of immunoglobulin heavy and light chain loci and expression of distinct cell surface markers [1]. After productive heavy chain rearrangement at the pro-B stage, the newly synthesized heavy chain pairs with surrogate light chains and forms the pre-B cell receptor (pre-BCR). Pre-B cells consist of two distinct subsets: large pre-B and small pre-B cells. Large pre-B cells are cycling cells expressing pre-BCR whereas small pre-B cells are quiescent cells following cell cycle exit. Pre-B cells expansion and the subsequent transition from large pre-B to small pre-B cells are tightly regulated during B cell development and is dependent on signals from the pre-BCR and IL-7 receptor [2]. Disruption of this coordinated developmental process can lead to abnormal B cells development and transformation. Indeed, acute lymphoblast leukemia (ALL) is often derived from pre-B cells that exhibit defects in proliferation and differentiation [3].

Interferon regulatory factor 4 (IRF4), is expressed predominantly in the immune system and plays an important role in its development and function [4]. IRF4, together with IRF8, are critical for the pre-B cell development. In the absence of IRF4 and IRF8, B cell development is blocked at the large pre-B stage [5]. We have shown that IRF4 limits pre-B cell expansion by inducing Ikaros and Aiolos which in turn directly suppress c-Myc expression [6,7]. In addition, IRF4 is critical for light chain rearrangement and receptor editing [8,9,10]. Beside its role at the pre-B stage, IRF4 is also required for mature B cell function. It has been shown that mice lacking IRF4 (IRF4<sup>-/-</sup>) fail to generate plasma cells and

are defective in response to T cell dependent and independent antigens [11]. Recent studies have further shown that IRF4 is critical for the class-switch recombination by inducing activation induced deaminase (AID) and for germinal center reaction by downregulating Bcl6 [12,13,14]. IRF4 has been found to induce c-Myc expression in multiple myeloma cells and is critical for their survival and expansion [15]. Finally, IRF4 can induce the expression of Fas apoptosis inhibitory molecule (FAIM) to regulate mature B cell survival and apoptosis [16].

Given its role as a critical transcriptional regulator that limits pre-B cell expansion and promotes pre-B cell differentiation, it is reasonable to assume that IRF4 may function as a tumor suppressor against pre-B cell transformation. Indeed, a previous study has shown that IRF4 functions as a tumor suppressor to inhibit BCR/ABL oncogene induced B cell acute lymphoblastic leukemia (B-ALL) [17]. In addition, mice deficient for both IRF4 and IRF8 develop lymphoblastic leukemia [18]. Although IRF4 can suppress BCR/ABL induced B cell transformation, the molecular mechanism by which IRF4 exerts its function remains unclear. In this report, we assessed the role of IRF4 in c-Myc oncogene induced B cell transformation by breeding IRF4 deficient mice with  $E\mu$ Myc transgenic mice. In the  $E\mu$ Myc mice, the expression of c-Myc oncogene is driven by immunoglobulin heavy chain enhancers and is predominantly found in the B cells.  $E\mu$ Myc transgenic mice mainly develop two types of leukemia/lymphoma: pro/pre-B derived and mature B cell derived and the majority of the  $E\mu$ Myc mice succumb to disease within 5 to 6 months of age [19]. It has been shown that the leukemogenesis of

E $\mu$ Myc mice can be modulated by oncogenes and tumor suppressor genes and thus, E $\mu$ Myc mice have been widely used as an animal model to assess the role of potential oncogenes or tumor suppressor genes in B cell transformation [20,21,22,23].

In this report, we show that c-Myc induced leukemia was greatly accelerated in the IRF4 heterozygous mutant mice. Moreover, we provided evidence that IRF4 functions as a classical tumor suppressor gene to inhibit c-Myc induced leukemogenesis. Our results further revealed that deficiency of IRF4 accelerated the loss of p27<sup>kip</sup> in the E $\mu$ Myc mice and reconstitution of IRF4 expression in leukemic cells restored p27<sup>kip</sup> expression in leukemic cells and inhibited their proliferation *in vivo*.

## Results

### C-Myc induced leukemia was accelerated in the IRF4<sup>+/-</sup> Myc mice

We did not observe a significant increase in tumor formation in IRF4 deficient mice, indicating that deficiency for IRF4 alone isn't sufficient for tumor development. Here, we wanted to examine whether deficiency of IRF4 synergizes with the c-Myc oncogene to induce B cell leukemia and lymphoma. We crossed IRF4<sup>-/-</sup> mice with the E $\mu$ Myc mice and generated IRF4 heterozygous mutant mice expressing E $\mu$ Myc transgene (IRF4<sup>+/-</sup>Myc). To our surprise, IRF4<sup>+/-</sup>Myc mice showed a dramatically accelerated mortality with a median age of 7 to 8 weeks (Fig. 1A). In contrast, the median age of mortality for IRF4<sup>+/+</sup>Myc mice is 20 weeks (Fig. 1A). By five weeks of age, IRF4<sup>+/-</sup>Myc mice had already massively enlarged spleens, while this was not evident in the IRF4<sup>+/+</sup>Myc mice of the same age (Figure S1A). H&E staining of isolated spleens further shows that while the demarcation of white and red pulps is clearly discernible in IRF4<sup>+/+</sup> and IRF4<sup>+/+</sup>Myc mice, it disappeared in the IRF4<sup>+/-</sup>Myc mice due to the expansion and infiltration of leukemic cells.

FACS analysis of cells in the bone marrow and spleen further show that there was a massive expansion of B220+ B cells in the IRF4<sup>+/-</sup>Myc mice (Fig. 1C/D and Tab. 1/2). Compared to IRF4<sup>+/+</sup>Myc mice, the absolute numbers of B220+ B cells was found to be 3-fold higher in bone marrow and 10-fold higher in spleen. While the absolute numbers of B220+IgM+ B cells in bone marrow and spleen were comparable between IRF4<sup>+/+</sup>Myc and IRF4<sup>+/-</sup>Myc mice, the absolute numbers of B220+IgM- B cells were dramatically increased in the IRF4<sup>+/-</sup>Myc mice (Fig. 1C/D and Tab 1/2). The massive expansion of leukemic cells also severely affected the development of other blood lineages. As shown in Fig. 1C, the percentages of CD11b+ myeloid cells in bone marrow decreased from 32% in the IRF4<sup>+/+</sup>Myc mice to only 1% in the IRF4<sup>+/-</sup>Myc mice. In spleen, the percentage of Thy1+ T cells decreased from 21% in IRF4<sup>+/+</sup>Myc mice to only 3% in the IRF4<sup>+/-</sup>Myc mice. The expansion and infiltration of leukemic cells also caused severe erosion and thinning of the femur and tibia. In addition, the B cell population (mainly B220+IgM-) was also increased in the blood of IRF4<sup>+/-</sup>Myc mice (Fig. 1E and data not shown). The leukemic cells also infiltrated the lymph node, thymus and liver, resulting in mild to moderate enlargement of those organs. Two additional sets of independent analysis can be found in Figure S1. Collectively, our results indicate that the IRF4<sup>+/-</sup>Myc mice developed leukemia that originated from B cell progenitors.

### IRF4<sup>+/-</sup> Myc leukemic cells were derived from large pre-B cells and were transplantable

To determine the identity of B220+IgM- cells in the IRF4<sup>+/-</sup>Myc mice, we stained the cells with a panel of cell surface as well as intracellular markers such as CD43, Bp-1, intracellular  $\mu$  and surrogate light chain  $\lambda$ 5. Pre-B cells express

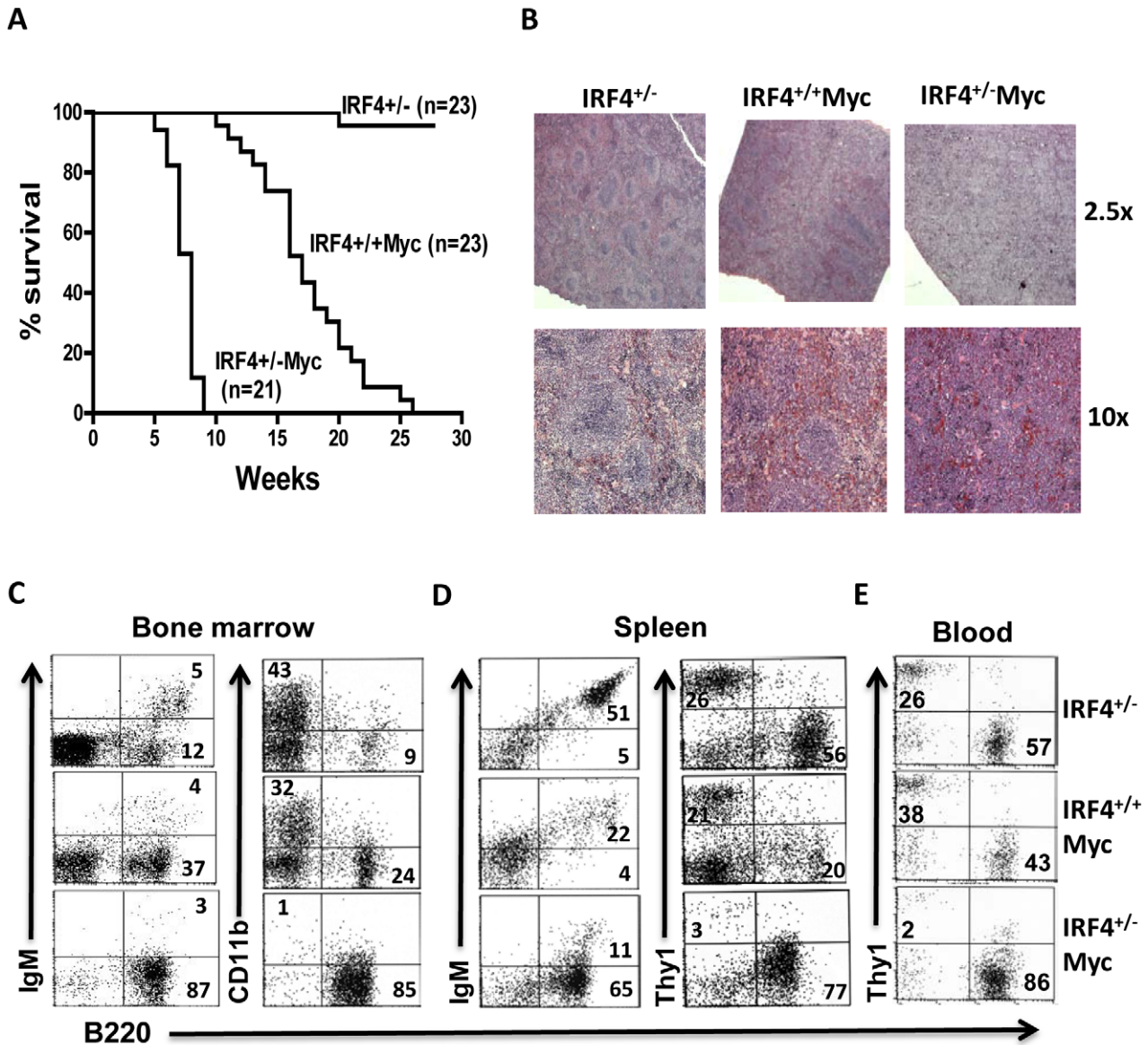
Bp-1 but do not express CD43. The heavy chain protein  $\mu$  ( $\mu$ ) can be detected intracellularly in the pre-B but not the pro-B cells.  $\lambda$ 5 is a component of pre-B cell receptor found only on the cell surface of pre-B cells. FACS analysis showed that B220+IgM- leukemic cells in the IRF4<sup>+/-</sup>Myc mice did not express CD43 but express a high level of Bp-1, intracellular  $\mu$  and surrogate light chain  $\lambda$ 5 (Fig. 2A/B/C/D). Collectively, these results indicate that the B220+IgM- leukemic cells were derived from the large pre-B cells. To determine if the leukemic cells derived from IRF4<sup>+/-</sup>Myc mice are transplantable, we injected IRF4<sup>+/-</sup>Myc bone marrow cells into non-irradiated wild type syngenic host mice. All ten recipient mice developed leukemia similar to IRF4<sup>+/-</sup>Myc mice (Fig. 2E) and died within two month of transplantation. Two additional sets of independent analysis can be found in Figure S2. In summary, IRF4<sup>+/-</sup>Myc mice develop pre-B cells derived leukemia that is transplantable in the syngenic mice.

### The B220+IgM- cells in IRF4<sup>+/-</sup> Myc mice exhibited enhanced proliferation and reduced apoptosis

We wanted to identify the molecular defects that led to the accelerated leukemogenesis in the IRF4<sup>+/-</sup>Myc mice. To this end, we examined the survival and proliferation of B220+IgM- cells in the bone marrow of 4-weeks old IRF4<sup>+/-</sup>Myc mice prior to the development of symptoms. At this age, although there was expansion of B220+IgM- cells in the bone marrow and spleen of IRF4<sup>+/-</sup>Myc mice, there were few B220+IgM- cells in the blood (data not shown). Bone marrow cells were isolated from IRF4<sup>+/-</sup>, IRF4<sup>+/+</sup>Myc and IRF4<sup>+/-</sup>Myc mice. After surface staining, the cell cycle status of B220+IgM- cells was examined with Hoechst dye as previously described [6,7]. Compared to the IRF4<sup>+/+</sup>Myc mice, B220+IgM- cells in the IRF4<sup>+/-</sup> Myc mice were hyperproliferative as 38 $\pm$ 8% of B220+IgM- cells were cycling (in S and G2/M phases) in the IRF4<sup>+/-</sup>Myc mice compared to 30 $\pm$ 6% in the IRF4<sup>+/+</sup>Myc mice (Fig. 3A). BrdU pulse-labeling analysis further revealed that the B220+IgM- cells in IRF4<sup>+/-</sup> Myc mice were cycling faster than their counterparts in the IRF4<sup>+/+</sup>Myc mice (data not shown). TUNEL analysis further revealed that 4.8 $\pm$ 1.1% of B220+IgM- cells in the IRF4<sup>+/+</sup>Myc mice were apoptotic whereas only 1.2 $\pm$ 0.6% of them in the IRF4<sup>+/-</sup>Myc mice underwent apoptosis (Fig. 3B). Collectively, these results show that the expanded B220+IgM- cells in the IRF4<sup>+/-</sup>Myc mice are hyperproliferative and resistant to apoptosis.

### Loss the expression of p27<sup>kip</sup> and disruption of the Arf-p53 pathway in the IRF4<sup>+/-</sup> Myc leukemic cells

P27<sup>kip</sup> is a cell cycle inhibitor, and loss of p27<sup>kip</sup> expression has been shown to accelerate c-Myc induced leukemia and lymphoma [23]. Moreover, our previous study has shown that p27<sup>kip</sup> is part of molecular circuitry that is responsible for shutting down pre-B cell proliferation [6]. Here, we further examined the expression of p27<sup>kip</sup> in the B220+IgM- cells described in Fig. 3A. Although p27<sup>kip</sup> expression was readily detectable in all three IRF4<sup>+/+</sup>Myc cells, its expression was lost in all six IRF4<sup>+/-</sup> Myc cells (Fig. 4A). Importantly, expression of c-Myc was comparable between IRF4<sup>+/+</sup>Myc and IRF4<sup>+/-</sup>Myc cells (Fig. 4A). To further assess the role of p27<sup>kip</sup> in the proliferation of IRF4<sup>+/-</sup>Myc leukemic cells, we transduced cultured IRF4<sup>+/-</sup>Myc leukemic cells with p27<sup>kip</sup> expression plasmid. As shown in Fig. 4B, restoring the expression of p27<sup>kip</sup> dramatically inhibited the proliferation of IRF4<sup>+/-</sup>Myc leukemic cells. The percentage of cycling cells decreased from 35% in the control to 12% in the p27<sup>kip</sup> transduced cells. Collectively, these results suggest that defective expression of p27<sup>kip</sup> contributes to the hyperproliferative index of IRF4<sup>+/-</sup>Myc leukemic cells.



**Figure 1. c-Myc induced leukemia was accelerated in the IRF4<sup>+/-</sup> Myc mice.** A). Kaplan-Meier survival curve of IRF4<sup>+/-</sup>, IRF4<sup>+/+</sup>Myc and IRF4<sup>+/-</sup> Myc mice. The genotypes and numbers of mice in each group are indicated on the plot. P value for pair-wise comparison using log rank test between IRF4<sup>+/+</sup>Myc and IRF4<sup>+/-</sup> Myc is p<0.0001. Graphpad PRISM 5.03 (Graphpad Software Inc) was used to plot the survival curve and calculate p value. B) Spleens were isolated from IRF4<sup>+/-</sup>, IRF4<sup>+/+</sup>Myc and IRF4<sup>+/-</sup> Myc mice and paraffin-embedded for H&E staining analysis. The stained tissues were examined under both low (2.5x) and high (10x) magnifications. C/D/E). Cells were isolated from the bone marrow (C), spleen (D) and blood (E) of six-week old IRF4<sup>+/-</sup>, IRF4<sup>+/+</sup>Myc and IRF4<sup>+/-</sup> Myc mice, stained with indicated antibodies and analyzed by FACS. Numbers indicated the percentages of cells in the respective quadrant. CD11b<sup>+</sup> myeloid cells in the bone marrow were examined under a live cell gate while B and T cells were examined under a lymphocyte gate. The data shown are representative of at least three independent experiments. doi:10.1371/journal.pone.0022628.g001

The development of leukemia and lymphoma in EμMyc mice is dependent on the disruption of Arf-p53 tumor suppressor pathway [24,25]. It has been shown that p53 is frequently mutated in EμMyc tumor [24]. The mutant form of p53 is often overexpressed and functions as a dominant negative mutant. To determine if Arf-p53 pathway is disrupted in the IRF4<sup>+/-</sup> Myc leukemic cells, we measured the expression of p53, Arf and c-Myc in IRF4<sup>+/-</sup> leukemic cells isolated from twelve different diseased mice. Our results show that p53 was overexpressed in three IRF4<sup>+/-</sup> Myc leukemic cells (Fig. 4C). Further sequence analysis shows that all three cells contained a p53 missense mutation R270C, which corresponds with a mutation hotspot of p53 found in human tumors

[26]. Expression of Arf is transcriptionally suppressed by p53 and the loss of p53 function often lead to overexpression of Arf in EμMyc tumor cells. Indeed, Arf was overexpressed in IRF4<sup>+/-</sup> Myc leukemic cells expressing mutant p53 (Fig. 4C). Overall, three out of twelve IRF4<sup>+/-</sup> Myc clones expressed mutant p53, a frequency that is similar to what has been reported in wild type EμMyc mice [24].

**IRF4 functions as a tumor suppressor in c-Myc induced leukemia**

The finding that c-Myc induced leukemia was dramatically accelerated in the IRF4<sup>+/-</sup> mice indicates that IRF4 functions as a tumor suppressor in c-Myc induced leukemia. During tumorigen-

**Table 1.** Absolute number of B220+, B220+IgM– and B220+IgM+ B cells in bone marrow of IRF4+/+, IRF4+/-, IRF4+/+Myc and IRF4+/-Myc mice ( $\times 10^6$ ).

| Genotype   | B220+      | B220+IgM–  | B220+IgM+ |
|------------|------------|------------|-----------|
| IRF4+/+    | 3.8±2.1    | 2.5±1.4    | 1.3±0.6   |
| IRF4+/-    | 3.1±0.7    | 1.9±0.6    | 1.0±0.2   |
| IRF4+/+Myc | 6.1±2.3    | 5.1±2.7    | 1.0±0.1   |
| IRF4+/-Myc | 19.5±6.4** | 18.0±5.7** | 1.3±0.4   |

Total number of B220+, B220+IgM– and B220+IgM+ B cells in mice of different genotypes under study. Cell were isolated from bone marrow of five-week-old IRF4+/+, IRF4+/- IRF4+/+Myc and IRF4+/-Myc mice. The cells were stained with antibodies against B220 and IgM and analyzed by FACS. The numbers are the averages and standard deviations of the results for a total of five mice in each group.

\*\*p<0.01 (compared to their counterparts in the IRF4+/+Myc mice).

doi:10.1371/journal.pone.0022628.t001

esis, loss of one copy of tumor suppressor genes is often followed by inactivation of the second allele. Indeed, in IRF4<sup>+/-</sup>Myc leukemic cells, the expression of IRF4 is lost in five out of six IRF4<sup>+/-</sup>Myc leukemic cells examined (Fig. 5A). Further sequence analysis of mRNA and DNA did not reveal deletion or mutations of IRF4 gene, suggesting that loss of IRF4 expression in the IRF4<sup>+/-</sup>Myc leukemic cells could be mediated by an epigenetic event or by the loss of essential transcriptional regulators. In contrast, the expression of c-Myc was not significantly affected in the IRF4<sup>+/-</sup>Myc leukemic cells.

To further examine the effect of IRF4 on c-Myc induced leukemogenesis, we developed a doxycycline (Dox) inducible, bistransgenic mouse model system in which the expression of IRF4 can be regulated *in vivo* by Dox. The first transgenic line MMTV-tTA was developed by Hennighausen et al, in which the expression of the tetracycline transactivator gene (tTA) is driven by the mouse mammary tumor virus LTR [27]. In this system, the tTA is active in the absence but not in the presence of Dox. Interestingly, it has been demonstrated that the tTA is expressed at a high level in the B cells of MMTV-tTA mice and thus, this model has been successfully used to induce B cell specific transgene expression [28,29,30,31]. As shown in Fig. 5B, expression of the IRF4 transgene is driven by a TRE promoter which consists of a minimal CMV promoter linked to tetracycline response elements.

**Table 2.** Absolute number of B220+, B220+IgM– and B220+IgM+ B cells in spleen of IRF4+/+, IRF4+/-, IRF4+/+Myc and IRF4+/-Myc mice ( $\times 10^6$ ).

| Genotype   | B220+        | B220+IgM–    | B220+IgM+ |
|------------|--------------|--------------|-----------|
| IRF4+/+    | 29.7±13.5    | 0.9±0.4      | 29.6±12.5 |
| IRF4+/-    | 15.0±6.2     | 0.5±0.4      | 14.7±5.8  |
| IRF4+/+Myc | 14.7±7.8     | 0.6±0.3      | 14.3±8.0  |
| IRF4+/-Myc | 141.0±48.0** | 128.0±40.4** | 12.7±7.8  |

Total number of B220+, B220+IgM– and B220+IgM+ B cells in mice of different genotypes under study. Cell were isolated from spleen of five-week-old IRF4+/+, IRF4+/- IRF4+/+Myc and IRF4+/-Myc mice. The cells were stained with antibodies against B220 and IgM and analyzed by FACS. The numbers are the averages and standard deviations of the results for a total of five mice in each group.

\*\*p<0.01 (compared to their counterparts in the IRF4+/+Myc mice).

doi:10.1371/journal.pone.0022628.t002

IRF4Tg and MMTV-tTA transgenic mice were crossed to generate double transgenic mice that are hemizygous for IRF4Tg and MMTV-tTA (Tg-tTA). The mice were initially fed with a high concentration of Dox (2 mg/ml Dox, 4% sucrose) for couple days and then switched to a low concentration to keep the transgene inactive. The expression of the IRF4 transgene was induced in mice by switching them to regular water. To examine the expression pattern of the IRF4 transgene in immune cells, we isolated B cell (B220+), granulocytes (Gr1+), and CD4+ T cells from bone marrow and spleen of Tg-tTA mice. Expression of the IRF4 transgene was detected with an anti-HA antibody. As shown in Fig. 5C, the IRF4 transgene was predominantly expressed in the B cells in the absence of Dox.

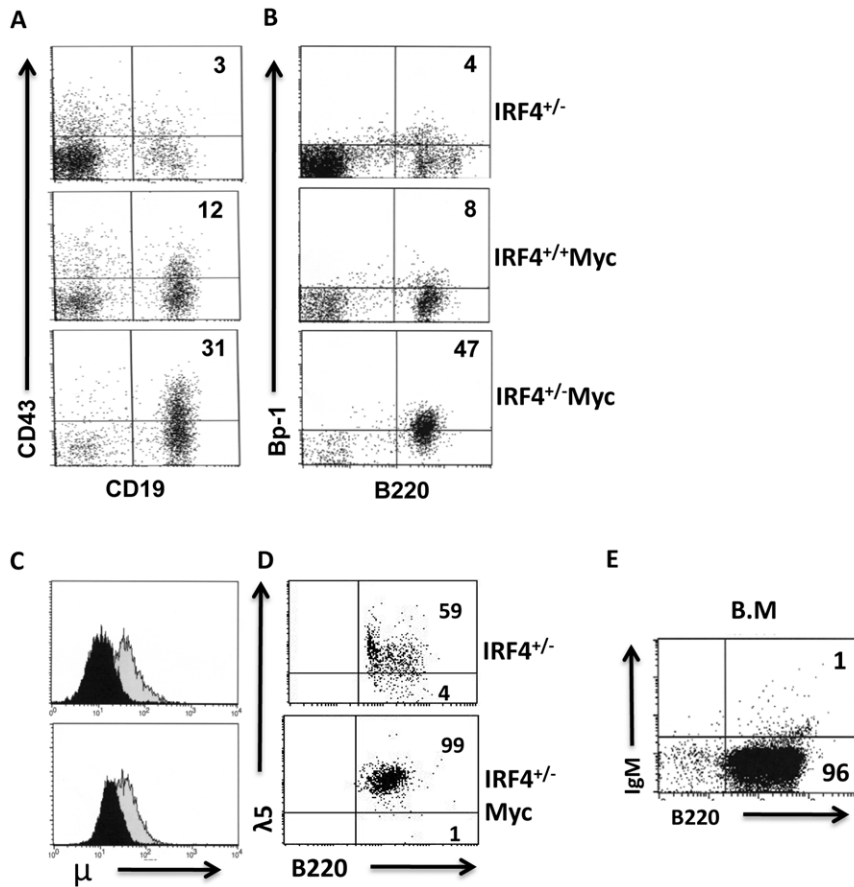
The Tg-tTA transgenic mice were subsequently crossed with IRF4 deficient mice and EμMyc mice to generate triple transgenic mice in the IRF4 heterozygous background (IRF4<sup>+/-</sup>MycTg-tTA). At five weeks of age, IRF4<sup>+/-</sup>MycTg-tTA mice were either switched to regular water to induce transgene expression or continuously fed with dox water. After another three weeks, the mice were sacrificed and analyzed. The total number of B220+IgM– B cells was dramatically reduced in the bone marrow and spleens of IRF4<sup>+/-</sup>MycTg-tTA mice fed with regular water (Fig. 5D and data not shown), indicating that expression of IRF4 transgene inhibited the expansion of IRF4<sup>+/-</sup>Myc leukemic cells. Cell cycle analysis further shows that expression of IRF4 transgene inhibited the proliferation of IRF4<sup>+/-</sup>Myc cells (Fig. 5E). Western blot analysis revealed that expression of p27<sup>kip</sup> was elevated in the IRF4<sup>+/-</sup>Myc cells expressing IRF4 transgene. Collectively, these results indicate that reconstitution of IRF4 expression induces p27<sup>kip</sup> and inhibits the proliferation of IRF4<sup>+/-</sup>Myc leukemic cells.

## Discussion

In this report, we provide evidence that IRF4 functions as a tumor suppressor in c-Myc induced B cell leukemia. Our results show that c-Myc induced leukemia was dramatically accelerated in IRF4<sup>+/-</sup>Myc mice. Moreover, five out of six of IRF4<sup>+/-</sup>Myc leukemic clones further inactivated the remaining wild type IRF4 allele, resulting in a complete loss of IRF4 expression in those cells. Our finding is consistent with a previous study which shows that IRF4 functions as tumor suppressor in BCR/ABL oncogene induced B-ALL and further demonstrates that IRF4 is capable of functioning as a tumor suppressor against a broad spectrum of oncogene insults at the pre-B stage. The accelerated leukemogenesis in the IRF4<sup>+/-</sup>Myc mice can be caused by defect in pre-B cell development. Progenitor B cells are expanded in wild type EμMyc mice. As IRF4 is a critical regulator of pre-B cell differentiation, loss of IRF4 expression can further exacerbate the defect in early B cell development in the EμMyc mice, causing further expansion of progenitor B cells pool that could serve as targets for subsequent transformation.

C-Myc induced leukemia and lymphoma is held in check by p27<sup>kip</sup> which inhibit cell cycle progression and by the Arf-p53 pathway that promotes apoptosis [20,24,32]. However, the frequency of p53 mutation in the IRF4<sup>+/-</sup>Myc leukemic cells is similar to wild type EμMyc cells, suggesting that accelerated leukemogenesis in IRF4<sup>+/-</sup>Myc mice isn't a result of high frequency of p53 mutation. Instead, our results indicate that deficiency of IRF4 accelerates the loss of p27<sup>kip</sup> in c-Myc overexpressing cells. First, the expanded B220+IgM– cells in IRF4<sup>+/-</sup>Myc mice lost the expression of p27<sup>kip</sup> and were hyperproliferative; second, reconstitution of IRF4 expression in IRF4<sup>+/-</sup>Myc leukemic cells induced the expression of p27<sup>kip</sup> and





**Figure 2. IRF4<sup>+/-</sup> Myc leukemic cells were derived from large pre-B cells and were transplantable.** A/B) Bone marrow cells were isolated from six-week old IRF4<sup>+/-</sup>, IRF4<sup>+/-</sup>Myc and IRF4<sup>+/-</sup>Myc mice. The cells were stained with antibodies against CD43, Bp-1, CD19 and B220. The stained cells were analyzed by FACS. Numbers are percentages of cells in the respective quadrant. C) IRF4<sup>+/-</sup>Myc leukemic cells expressed intracellular  $\mu$ . The bone marrow cells isolated above were stained with antibodies against B220 and CD43. After fixation and permeabilization, the expression of intracellular heavy chain  $\mu$  was detected with an anti-IgM antibody. The isotype IgG1 antibody staining was used as a control for non-specific binding. The dark area (control IgG1) and light area (anti-IgM). D) IRF4<sup>+/-</sup> and IRF4<sup>+/-</sup>Myc cells expressed surrogate light chain  $\lambda 5$ . Bone marrow cells isolated from IRF4<sup>+/-</sup> and IRF4<sup>+/-</sup>Myc mice were cultured in presence of IL-7 for two days. The expression of surrogate light chain  $\lambda 5$  was detected by FACS. E) Bone marrow cells were isolated from IRF4<sup>+/-</sup>Myc mice and transplanted into the non-irradiated syngenic host mice at  $1 \times 10^6$  cells per mouse. A total of 10 host mice were used. The host mice were analyzed by FACS after 5 to 10 weeks. A representative bone marrow analysis was shown. doi:10.1371/journal.pone.0022628.g002

inhibited their proliferation. It has been shown that Ikaros can induce the expression p27<sup>kip</sup> in leukemic cells [33]. As expression of Ikaros is induced by IRF4, it is possible that the induction of p27<sup>kip</sup> expression could be mediated by Ikaros. It is also possible that loss of IRF4 expression somehow accelerates the loss of p27<sup>kip</sup> in c-Myc overexpressing cells through mechanisms independent of Ikaros.

Pre-B cell receptor signaling has been proposed as a guardian of pre-B cell transformation by coordinating pre-B cell expansion and differentiation. IRF4 expression is dependent on pre-BCR signaling which is transduced by downstream signaling molecules such as Blnk, Btk and PLC $\gamma$ 2. Moreover, previous studies have identified Btk, Blnk and PLC $\gamma$ 2 as potential tumor suppressors against pre-B cell transformation [34,35,36,37]. Interestingly, a previous study has shown that c-Myc induced leukemia/lymphoma is accelerated in PLC $\gamma$ 2 deficient mice (PLC $\gamma$ 2<sup>-/-</sup>Myc) [34]. Similar to IRF4, PLC $\gamma$ 2 is critical for pre-B cell development and in its absence, pre-B cell development is partially blocked, resulting in an expansion of pre-B cells. Interestingly, like IRF4<sup>+/-</sup>Myc leukemic cells, PLC $\gamma$ 2<sup>-/-</sup>Myc tumor cells lost the expression of p27<sup>kip</sup> and didn't exhibit enhanced frequency of p53 mutation [34]. However, PLC $\gamma$ 2 does not behave like classical

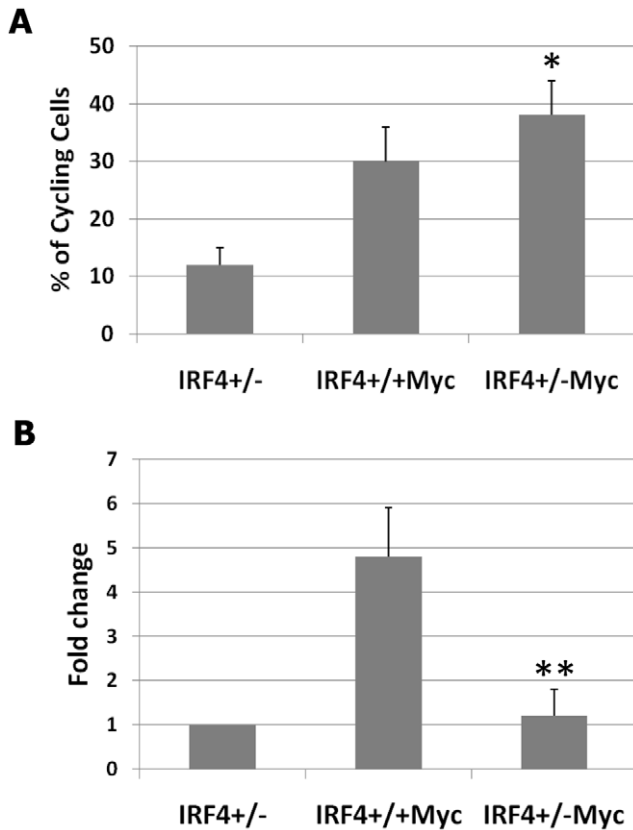
tumor suppressor as c-Myc induced leukemogenesis remains unaltered in the PLC $\gamma$ 2<sup>+/-</sup>Myc mice. In contrast, our results show that IRF4 behaves like a classical tumor suppressor, downstream of pre-BCR signaling, that functions to inhibit c-Myc induced leukemia.

## Materials and Methods

### Mice

IRF4 mutant mice (IRF4<sup>-/-</sup>) have been previously described [11]. E $\mu$ Myc transgenic mice were purchased from Jackson Laboratories [19]. E $\mu$ Myc transgenic mice were bred with IRF4<sup>-/-</sup> mice to generate IRF4<sup>+/-</sup>Myc mice that are hemizygous for Myc transgene (IRF4<sup>+/-</sup>Myc). All mice were maintained under specific pathogen-free conditions. Experiments were performed according to guidelines from the National Institutes of Health and with an approved protocol from the Institutional Animal Care and Use Committee of University of Nebraska Medical Center (Permit Number: 10-015-05). The mice aged from 5 to 30 weeks were used for this study.

**Cell culture and retroviral infection.** B220+ cells were isolated from bone marrow of IRF4<sup>+/-</sup>Myc mice using a MACS



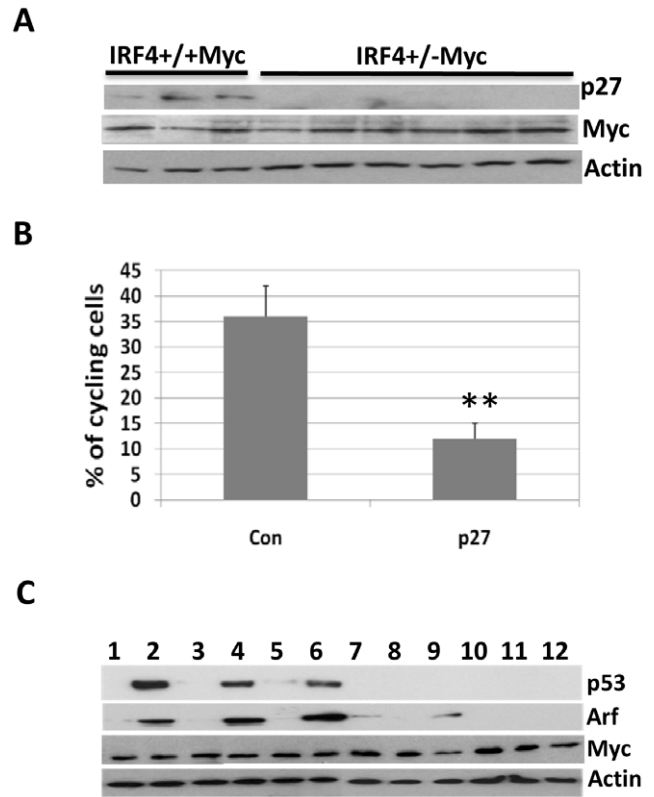
**Figure 3. B220+IgM<sup>-</sup> cells in IRF4<sup>+/-</sup>Myc mice exhibited enhanced proliferation and reduced apoptosis.** Bone marrow cells were isolated from four-week old IRF4<sup>+/-</sup>, IRF4<sup>+/+</sup>Myc and IRF4<sup>+/-</sup>Myc mice. The cells were stained with antibodies against B220 or IgM. A) To analyze cell cycle status, the stained cells were incubated with Hoechst dye (10 μg/ml) and analyzed by LSR II Flow Cytometer. The percentages of cycling cells among B220+IgM<sup>-</sup> population in different groups were shown. B) To detect apoptotic cells, the stained cells were fixed and permeabilized. The percentages of apoptotic cells among B220+IgM<sup>-</sup> population were determined with a TUNEL kit and plotted as fold changes over IRF4<sup>+/-</sup> control mice. The results are average and standard deviation of the values obtained from six independent experiments. \* p<0.05; \*\* p<0.01.

doi:10.1371/journal.pone.0022628.g003

separation column (Miltenyi Biotech). Purified cells were overlaid on top of an irradiated S17 stromal cell layer in Opti-MEM (Gibco) medium containing 5% FBS, 50 μM β-mercaptoethanol, 2 mM L-glutamine, 100 U penicillin-streptomycin and 5 ng/ml IL-7 (R&D). S17 is a bone marrow stromal cell line that can support both myeloid and B lymphocyte development. Retroviral vectors expressing p27<sup>kip</sup> have been described previously [7]. Retroviral infection of cultured IRF4<sup>+/-</sup>Myc leukemic cells was conducted as described previously [7]. The infected cells were analyzed by FACS two days after infection.

**Fluorescence-activated cell sorter analysis (FACS), TUNEL, and cell cycle analyses**

5–10 weeks old IRF4<sup>+/+</sup>, IRF4<sup>+/-</sup>, IRF4<sup>+/+</sup>Myc and IRF4<sup>+/-</sup>Myc mice were used for FACS analysis. Cells were pre-incubated with either 2% rat serum or Fc-Block (2.4G2), and stained with optimal amounts of specific antibodies, either biotinylated or directly fluorophore-conjugated. Antibodies against B220 (RA3-6B2), CD19 (ID3), Thy-1, CD43, Bp-1, IgM and λ5 were purchased from Pharmingen; FACS analysis was performed



**Figure 4. Loss of expression of p27<sup>kip</sup> and disruption of Arf-p53 pathway in IRF4<sup>+/-</sup>Myc leukemic cells.** A) Bone marrow cells were isolated from four-week old IRF4<sup>+/+</sup>Myc (n=3) and IRF4<sup>+/-</sup>Myc mice (n=6). The B220+IgM<sup>-</sup> population was isolated via sorting and lysed. Western blot analysis was carried out with antibodies against p27, Myc and β-actin. B) IRF4<sup>+/-</sup>Myc leukemic cells were cultivated in RPMI-1640 plus 5% FBS in the presence of IL7 (5 ng/ml). The cells were infected with retrovirus expressing either MigR1 (control) or MigR1-p27 (p27). Two days after infection, the infected cells were incubated with Hoechst dye and analyzed by LSR II Flow Cytometer. The percentages of cycling cells in control and p27 infected cells were shown. The results are average and standard deviation of the values obtained from three independent experiments. \*\* p<0.01 C) Leukemic cells were isolated from twelve sick IRF4<sup>+/-</sup>Myc mice and lysed for Western blot analysis. The antibodies against p53, Arf, Myc and β-actin were used.

doi:10.1371/journal.pone.0022628.g004

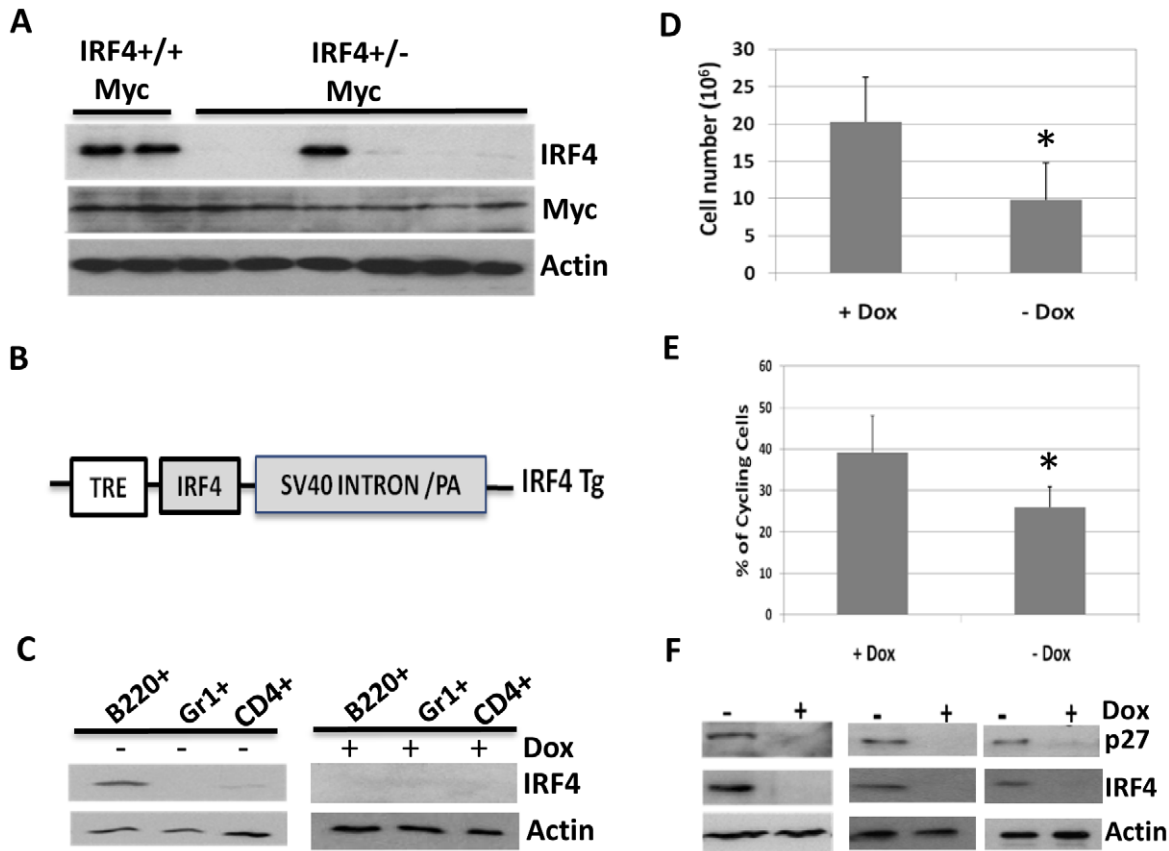
with a FACS Calibur flow cytometer. The terminal deoxynucleotidyltransferase-mediated dUTP-biotin nick end labeling (TUNEL) assay was carried out with an APO-Direct Kit (Pharmingen). B cells labeled with dUTP in the absence of terminal transferase were used as negative control. The stained cells were analyzed by FACS. Cell cycle analysis with live cells was conducted using Hoechst 33342 dye as previously described [7].

**Bone marrow transplantation**

Bone marrow cells were isolated from hind limbs of the mice. The whole bone marrow cells were injected via retro-orbital sinus into nonirradiated syngenic host mice at 1 × 10<sup>6</sup> cells per mouse. B cell population in the recipient mice was analyzed by FACS after five to 10 weeks.

**Western Blot and Immunohistochemistry analysis**

Isolated B cells were lysed and used for Western blot analysis. The signals were visualized using the SuperSignal West Dura HRP Detection kit (Pierce). The information for the antibodies



**Figure 5. IRF4 functions as a tumor suppressor in c-Myc induced leukemia.** A) IRF4<sup>+/+</sup>-Myc leukemic cells lost the wild type IRF4 allele. B220+IgM<sup>-</sup> cells were isolated from bone marrow of sick IRF4<sup>+/-</sup>-Myc mice (n=6) and two IRF4<sup>+/+</sup>-Myc littermate control mice. The B220+IgM<sup>-</sup> cells were lysed for Western blot analysis with antibodies against IRF4, Myc and  $\beta$ -actin. B) Map of IRF4 transgenic construct. The diagram depicts the constructs of IRF4 transgenic construct including tetracycline response element (TRE) and SV40 intron and ployA tail. C) IRF4 transgene was predominantly expressed in B cells. IRF4Tg and MMTV-tTA single transgenic mice were crossed to generate double transgenic mice (Tg-tTA). B cells, T cells and granulocytes were isolated from Tg-tTA double transgenic mice one week after Dox removal. The cells isolated from Tg-tTA mice fed with Dox water were lysed and used as control. The expression of the IRF4 transgene was detected by Western Blot using an anti-HA antibody. D/E) Expression of IRF4 transgene inhibited the expansion of IRF4<sup>+/-</sup>-Myc leukemic cells. The Tg-tTA transgenic mice crossed with IRF4 deficient mice and E $\mu$ Myc mice to generate IRF4<sup>+/-</sup> mice that were hemizygous for Tg-tTA and E $\mu$ Myc transgene (IRF4<sup>+/-</sup>-MycTg-tTA). At five weeks of age, IRF4<sup>+/-</sup>-MycTg-tTA mice were either switched to regular water to induce transgene expression or continuously fed with dox water. After another three weeks, the mice were sacrificed and analyzed by FACS. Numbers of B220+IgM<sup>-</sup> cells in the bone marrow of IRF4<sup>+/-</sup>-MycTg-tTA mice were counted (D). In addition, percentages of cycling cells among B220+IgM<sup>-</sup> population were also analyzed using method described above (E). The results were averages and standard deviations of six independent experiments. \*p<0.05. F) Expression of IRF4 transgene induced the expression of p27 in IRF4<sup>+/-</sup>-Myc leukemic cells. B220+IgM<sup>-</sup> cells were isolated from three pairs of IRF4<sup>+/-</sup>-MycTg-tTA mice in presence or absence of Dox and lysed for Western blot analysis. The effect of IRF4 transgene expression on p27 expression was examined.  
doi:10.1371/journal.pone.0022628.g005

used in this study: antibodies against IRF4, p27<sup>kip</sup>, Myc and  $\beta$ -actin (Santa Cruz); antibody against Arf (ab80, Abcam) and antibody against p53 (Ab7, Calbiochem). For immunohistochemical analysis, the spleens were fixed in formalin and paraffin-embedded. H&E staining was carried out at the tissue process core facility of the University of Nebraska Medical Center.

**Generation of an inducible IRF4 transgenic mouse**

To generate Doxycycline (Dox) responsive IRF4 transgenic mice, a full-length IRF4 cDNA with a HA tag at the N-terminus was inserted into the pTet-Splice vector, generating the transgenic plasmid (IRF4Tg). The expression of the IRF4 transgene is driven by a TRE promoter which consists of a minimal CMV promoter fused with a tetracycline response element. Microinjections were performed by the Transgenic Mouse Core Facility at the University of Nebraska Medical Center. Six different founder lines were established and crossed with another transgenic line

which expresses tetracycline transactivator gene MMTV-tTA mice (Jackson lab). In this system, tTA becomes active in the absence but not in the presence of Dox. After crossing, all lines were found to express IRF4 in the absence of Dox and the one expressing the highest level of IRF4 was chosen for further analysis. All mice were maintained under specific pathogen-free conditions. Experiments were performed according to guidelines from the National Institutes of Health and with an approved protocol from the Institutional Animal Care and Use Committee of University of Nebraska Medical Center (Permit Number: 10-015-05). The mice aged from 5 to 30 weeks were used for this study.

**Supporting Information**

**Figure S1 Two additional sets of independent experiments to show that c-Myc induced leukemia is acceler-**

**ated in the IRF4<sup>+/-</sup>Myc mice.** A) splenomegaly in IRF4<sup>+/-</sup>Myc mice B) Spleens were isolated from IRF4<sup>+/-</sup>, IRF4<sup>+/+</sup>Myc and IRF4<sup>+/-</sup>Myc mice and paraffin-embedded for H&E staining analysis. The stained tissues were examined under both low (2.5×) and high (10×) magnifications. C/D/E). Cells were isolated from the bone marrow (C), spleen (D) and blood (E) of six-week old IRF4<sup>+/-</sup>, IRF4<sup>+/+</sup>Myc and IRF4<sup>+/-</sup>Myc mice, stained with indicated antibodies and analyzed by FACS. Numbers indicated the percentages of cells in the respective quadrant. CD11b<sup>+</sup> myeloid cells in the bone marrow were examined under a live cell gate while B and T cells were examined under a lymphocyte gate. The data shown are representative of at least three independent experiments. (TIF)

**Figure S2 Two additional sets of independent experiments to show that IRF4<sup>+/-</sup>Myc leukemic cells were derived from large pre-B cells and were transplantable.** A/B/) Bone marrow cells were isolated from six-week old IRF4<sup>+/-</sup>, IRF4<sup>+/+</sup>Myc and IRF4<sup>+/-</sup>Myc mice. The cells were stained with antibodies against CD43, Bp-1, CD19 and B220. The stained cells were analyzed by FACS. Numbers are percentages of cells in the respective quadrant. C) IRF4<sup>+/-</sup>Myc leukemic cells expressed intracellular  $\mu$ . The bone marrow cells isolated above were stained with antibodies against B220 and CD43. After fixation and permeabilization, the expression of intracellular heavy

chain  $\mu$  was detected with an anti-IgM antibody. The isotype IgG1 antibody staining was used as a control for non-specific binding. The dark area (control IgG1) and light area (anti-IgM). D) IRF4<sup>+/-</sup>Myc cells expressed surrogate light chain  $\lambda$ 5. Bone marrow cells isolated from IRF4<sup>+/+</sup> and IRF4<sup>+/-</sup>Myc mice were cultured in presence of IL-7 for two days. The expression of surrogate light chain  $\lambda$ 5 was detected by FACS. E) Bone marrow cells were isolated from IRF4<sup>+/+</sup>Myc mice and transplanted into the non-irradiated syngenic host mice at  $1 \times 10^6$  cells per mouse. A total of 10 host mice were used. The host mice were analyzed by FACS after 5 to 10 weeks. Two representative bone marrow analysis were shown. (TIF)

## Acknowledgments

We wish to thank Dr. Vimla Band's lab for help with Western blot analysis and Dr. Wang Demin (Blood Center of Wisconsin) for help with genotyping analysis.

## Author Contributions

Conceived and designed the experiments: SP SM RL. Performed the experiments: SP SM LT. Analyzed the data: SP SM JE SJ RL. Contributed reagents/materials/analysis tools: KW. Wrote the paper: RL.

## References

- Hardy RR, Hayakawa K (2001) B cell development pathways. *Annu Rev Immunol* 19: 595–621.
- Herzog S, Reth M, Jumaa H (2009) Regulation of B-cell proliferation and differentiation by pre-B-cell receptor signalling. *Nat Rev Immunol* 9: 195–205.
- Teitell MA, Pandolfi PP (2009) Molecular genetics of acute lymphoblastic leukemia. *Annu Rev Pathol* 4: 175–198.
- Lu R (2008) Interferon regulatory factor 4 and 8 in B-cell development. *Trends Immunol* 29: 487–492.
- Lu R, Medina KL, Lancki DW, Singh H (2003) IRF-4,8 orchestrate the pre-B-to-B transition in lymphocyte development. *Genes Dev* 17: 1703–1708.
- Ma S, Pathak S, Mandal M, Clark RM, Trinh L, et al. (2010) Ikaros and Aiolos inhibit pre-B cells proliferation by directly suppressing c-Myc expression. *Mol Cell Biol* 30: 4149–4158.
- Ma S, Pathak S, Trinh L, Lu R (2008) Interferon regulatory factors 4 and 8 induce the expression of Ikaros and Aiolos to down-regulate pre-B-cell receptor and promote cell-cycle withdrawal in pre-B-cell development. *Blood* 111: 1396–1403.
- Johnson K, Hashimshony T, Sawai CM, Pongubala JM, Skok JA, et al. (2008) Regulation of immunoglobulin light-chain recombination by the transcription factor IRF-4 and the attenuation of interleukin-7 signaling. *Immunity* 28: 335–345.
- Ma S, Turetsky A, Trinh L, Lu R (2006) IFN regulatory factor 4 and 8 promote Ig light chain kappa locus activation in pre-B cell development. *J Immunol* 177: 7898–7904.
- Pathak S, Ma S, Trinh L, Lu R (2008) A role for interferon regulatory factor 4 in receptor editing. *Mol Cell Biol* 28: 2815–2824.
- Mitrucker HW, Matsuyama T, Grossman A, Kundig TM, Potter J, et al. (1997) Requirement for the transcription factor LSIRF/IRF4 for mature B and T lymphocyte function. *Science* 275: 540–543.
- Sciammas R, Shaffer AL, Schatz JH, Zhao H, Staudt LM, et al. (2006) Graded expression of interferon regulatory factor-4 coordinates isotype switching with plasma cell differentiation. *Immunity* 25: 225–236.
- Klein U, Casola S, Cattoretti G, Shen Q, Lia M, et al. (2006) Transcription factor IRF4 controls plasma cell differentiation and class-switch recombination. *Nat Immunol* 7: 773–782.
- Saito M, Gao J, Basso K, Kitagawa Y, Smith PM, et al. (2007) A signaling pathway mediating downregulation of BCL6 in germinal center B cells is blocked by BCL6 gene alterations in B cell lymphoma. *Cancer Cell* 12: 280–292.
- Shaffer AL, Emre NC, Lamy L, Ngo VN, Wright G, et al. (2008) IRF4 addiction in multiple myeloma. *Nature* 454: 226–231.
- Kaku H, Rothstein TL (2009) Fas apoptosis inhibitory molecule expression in B cells is regulated through IRF4 in a feed-forward mechanism. *J Immunol* 183: 5575–5581.
- Acquaviva J, Chen X, Ren R (2008) IRF-4 functions as a tumor suppressor in early B-cell development. *Blood* 112: 3798–3806.
- Jo SH, Schatz JH, Acquaviva J, Singh H, Ren R (2010) Cooperation between deficiencies of IRF-4 and IRF-8 promotes both myeloid and lymphoid tumorigenesis. *Blood* 116: 2759–2767.
- Adams JM, Harris AW, Pinkert CA, Corcoran LM, Alexander WS, et al. (1985) The c-myc oncogene driven by immunoglobulin enhancers induces lymphoid malignancy in transgenic mice. *Nature* 318: 533–538.
- Bouchard C, Thieke K, Maier A, Saffrich R, Hanley-Hyde J, et al. (1999) Direct induction of cyclin D2 by Myc contributes to cell cycle progression and sequestration of p27. *Embo J* 18: 5321–5333.
- Egle A, Harris AW, Bouillet P, Cory S (2004) Bim is a suppressor of Myc-induced mouse B cell leukemia. *Proc Natl Acad Sci U S A* 101: 6164–6169.
- Garrison SP, Jeffers JR, Yang C, Nilsson JA, Hall MA, et al. (2008) Selection against PUMA gene expression in Myc-driven B-cell lymphomagenesis. *Mol Cell Biol* 28: 5391–5402.
- Martins CP, Berns A (2002) Loss of p27(Kip1) but not p21(Cip1) decreases survival and synergizes with MYC in murine lymphomagenesis. *Embo J* 21: 3739–3748.
- Eischen CM, Weber JD, Roussel MF, Sherr CJ, Cleveland JL (1999) Disruption of the ARF-Mdm2-p53 tumor suppressor pathway in Myc-induced lymphomagenesis. *Genes Dev* 13: 2658–2669.
- Schmitt CA, McCurrach ME, de Stanchina E, Wallace-Brodeur RR, Lowe SW (1999) INK4a/ARF mutations accelerate lymphomagenesis and promote chemoresistance by disabling p53. *Genes Dev* 13: 2670–2677.
- Ko LJ, Prives C (1996) p53: puzzle and paradigm. *Genes Dev* 10: 1054–1072.
- Hennighausen L, Wall RJ, Tillmann U, Li M, Furth PA (1995) Conditional gene expression in secretory tissues and skin of transgenic mice using the MMTV-LTR and the tetracycline responsive system. *J Cell Biochem* 59: 463–472.
- Refaeli Y, Young RM, Turner BC, Duda J, Field KA, et al. (2008) The B cell antigen receptor and overexpression of MYC can cooperate in the genesis of B cell lymphomas. *PLoS Biol* 6: e152.
- Refaeli Y, Field KA, Turner BC, Trumpp A, Bishop JM (2005) The protooncogene MYC can break B cell tolerance. *Proc Natl Acad Sci U S A* 102: 4097–4102.
- Huettner CS, Zhang P, Van Etten RA, Tenen DG (2000) Reversibility of acute B-cell leukaemia induced by BCR-ABL1. *Nat Genet* 24: 57–60.
- Young RM, Polsky A, Refaeli Y (2009) TC-PTP is required for the maintenance of MYC-driven B-cell lymphomas. *Blood* 114: 5016–5023.
- Perez-Roger I, Kim SH, Griffiths B, Sewing A, Land H (1999) Cyclins D1 and D2 mediate myc-induced proliferation via sequestration of p27(Kip1) and p21(Cip1). *Embo J* 18: 5310–5320.
- Gomez-del Arco P, Maki K, Georgopoulos K (2004) Phosphorylation controls Ikaros's ability to negatively regulate the G(1)-S transition. *Mol Cell Biol* 24: 2797–2807.
- Wen R, Chen Y, Bai L, Fu G, Schuman J, et al. (2006) Essential role of phospholipase C gamma 2 in early B-cell development and Myc-mediated lymphomagenesis. *Mol Cell Biol* 26: 9364–9376.



35. Flemming A, Brummer T, Reth M, Jumaa H (2003) The adaptor protein SLP-65 acts as a tumor suppressor that limits pre-B cell expansion. *Nat Immunol* 4: 38–43.
36. Kersseboom R, Middendorp S, Dingjan GM, Dahlenborg K, Reth M, et al. (2003) Bruton's tyrosine kinase cooperates with the B cell linker protein SLP-65 as a tumor suppressor in Pre-B cells. *J Exp Med* 198: 91–98.
37. Ta VB, de Haan AB, de Bruijn MJ, Dingjan GM, Hendriks RW (2011) Pre-B-cell leukemias in Btk/Slp65-deficient mice arise independently of ongoing V(D)J recombination activity. *Leukemia* 25: 48–56.